



**PANSAVER**<sup>®</sup>  
Food Service Solutions

Product Catalog

# PANSAVER<sup>®</sup> OVENABLE (400°F) PAN LINERS



Description	Item #	Product Dimensions	Pan Dimensions	Pan Depth	Unit/Pack
<b>HALF PANS</b>					
Half Pan - Shallow (100 ct)	42637	23" x 11"	10.4" x 12.8"	2.5"	1/100
Half Pan - Shallow (500 ct)	42642	23" x 11"	10.4" x 12.8"	2.5"	1/500
Half Pan - Medium / Deep (100 ct)	42636	23" x 14"	10.4" x 12.8"	4" & 6"	1/100
Half Pan - Medium / Deep (500 ct)	42641	23" x 14"	10.4" x 12.8"	4" & 6"	1/500
Half Pan - X-Deep (100 ct)	42926	23" x 18"	10.4" x 12.8"	8"	1/100
Half Pan Long - Shallow (100 ct)	42638	27" x 10"	20.25" x 6.44"	2.5"	1/100
Half Pan Long - Medium (100 ct)	42639	27" x 11"	20.25" x 6.44"	4"	1/100
Half Pan Long - Deep (100 ct)	42640	27" x 14"	20.25" x 6.44"	6"	1/100
<b>FULL HOTEL PANS</b>					
Hotel Pan - Shallow / Medium (100 ct)	42001	34" x 12"	20.8" x 12.8"	2.5" & 4"	1/100
Hotel Pan - Shallow / Medium (500 ct)	42101	34" x 12"	20.8" x 12.8"	2.5" & 4"	1/500
Hotel Pan - Deep (50 ct)	42002	34" x 18"	20.8" x 12.8"	6"	1/50
Hotel Pan - Deep (250 ct)	42102	34" x 18"	20.8" x 12.8"	6"	1/250
Hotel Pan - X-Deep (50 ct)	42924	34" x 22"	20.8" x 12.8"	8"	1/50
<b>BUN SHEET PANS</b>					
Half Bun Sheet Pan (100 ct)	42873	14.25" x 19"	12.5" x 17.5"	N/A	1/100
Bun Sheet Pan (100 ct)	42008	20.5" x 28.5"	25.5" x 17.5"	N/A	1/100
Bun Sheet Pan (500 ct)	42108	20.5" x 28.5"	25.5" x 17.5"	N/A	1/500
<b>ROASTING PANS</b>					
G.I. Roasting Pan (50 ct)	42517	38" x 18"	20" x 17"	6.5"	1/50
G.I. Roasting Pan (250 ct)	42515	38" x 18"	20" x 17"	6.5"	1/250
Full Size Roasting Pan (200 ct)	42546	42" x 14"	24.75" x 17.75"	4"	1/200
<b>SIXTH PANS</b>					
Sixth Pan (100 ct)	42595	13" x 14"	6.9" x 6.4"	6"	1/100
Sixth Pan (500 ct)	42596	13" x 14"	6.9" x 6.4"	6"	1/500
Sixth Pan - X-Deep (100 ct)	42006	13" x 18"	6.9" x 6.4"	8"	1/100
Sixth Pan - X-Deep (500 ct)	42106	13" x 18"	6.9" x 6.4"	8"	1/500
<b>THIRD &amp; QUARTER PANS</b>					
Third & Quarter Pan - Shallow	42553	19" x 10"	6.9" x 12.8"	2.5"	1/500
Third & Quarter Pan - Medium / Deep (100 ct)	42005	19" x 14"	6.9" x 12.8"	4" & 6"	1/100
Third & Quarter Pan - Medium / Deep (500 ct)	42105	19" x 14"	6.9" x 12.8"	4" & 6"	1/500

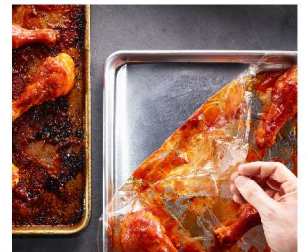
# PANSAVER<sup>®</sup> OVENABLE (400°F) PAN LINERS CONTINUED

## ROUND PANS

2 Quart Round (100 ct)	42009	9" x 14"	5.5" diameter	8.2"	1/100
2 Quart Round (500 ct)	42109	9" x 14"	5.5" diameter	8.2"	1/500
4 Quart Round (100 ct)	42010	12" x 15"	7" diameter	8.2"	1/100
4 Quart Round (500 ct)	42110	12" x 15"	7" diameter	8.2"	1/500
6 & 7 Quart Round (100 ct)	42011	15" x 15"	9.5" diameter	8.2"	1/100
6 & 7 Quart Round (500 ct)	42111	15" x 15"	9.5" diameter	8.2"	1/500
9 & 11 Quart Round (100 ct)	42007	18" x 20"	11" diameter	8.2"	1/100
9 & 11 Quart Round (500 ct)	42107	18" x 20"	11" diameter	8.2"	1/500



**ENVIRONMENTALLY-FRIENDLY  
OVENABLE (400°F) PAN LINERS**



Description	Item #	Product Dimensions	Pan Dimensions	Pan Depth	Unit/Pack
<b>ROUND PANS</b>					
4 Quart Round (100 ct)	45012	12" x 15"	7" diameter	8.2"	1/100
6 & 7 Quart Round (100 ct)	45015	15" x 15"	9.5" diameter	8.2"	1/100
9 & 11 Quart Round (100 ct)	45018	18" x 20"	11" diameter	8.2"	1/100
<b>FULL HOTEL PANS</b>					
Hotel Pan - Shallow (100 ct)	45042	34" x 12"	20.8" x 12.8"	2.5"	1/100
Hotel Pan - Medium (100 ct)	45044	34" x 14"	20.8" x 12.8"	4"	1/100
Hotel Pan - Deep (50 ct)	45048	34" x 18"	20.8" x 12.8"	6"	1/50
<b>OTHER PANS</b>					
Sixth Pan (100 ct)	45050	13" x 14"	6.9" x 6.4"	6"	1/100
Third & Quarter Pan - Medium / Deep (100 ct)	45010	19" x 14"	6.9" x 12.8"	4" & 6"	1/100
Bun Sheet Pan (100 ct)	45020	20.5" x 28.5"	25.5" x 17.5"	N/A	1/100
Half Pan - Medium / Deep (100 ct)	45030	23" x 14"	10.4" x 12.8"	4" & 6"	1/100

## Scrub Saver® STEAM TABLE (220°) PAN LINERS



Description	Item #	Product Dimensions	Pan Dimensions	Pan Depth	Unit/Pack
4 Quart Round (250 ct)	42959	11.25" x 15"	7" diameter	4" & 6"	1/250
6 & 7 Quart Round (250 ct)	42950	15" x 15"	9.5" diameter	8.2"	1/250
Sixth Pan (250 ct)	42949	12.5" x 12"	6.9" x 6.4"	6"	1/250
Quarter Pan - Medium / Deep (250 ct)	42957	15.75" x 12"	6.4" x 10.5"	4" x 6"	1/250
Third Pan - Medium / Deep (250 ct)	42948	18.75" x 14"	6.9" x 12.8"	4" & 6"	1/250
Half Pan - Medium / Deep (250 ct)	42947	23" x 16"	10.4" x 12.8"	4" & 6"	1/250
Hotel Pan - Shallow / Medium (250 ct)	42955	34" x 16"	20.8" x 12.8"	2.5" & 4"	1/250
Hotel Pan - Deep (250 ct)	42946	34" x 25"	20.8" x 12.8"	6"	1/250
Bun Sheet Bag (200 ct)	42951	27" x 37"	25.5" x 17.5"	N/A	1/200
Bun Pan Rack Cover (50 ct)	42933	52" x 80"	N/A	N/A	1/50

## PANSAVER® OVEN BAGS (400°F)



Description	Item #	Product Dimensions	Pan Dimensions	Pan Depth	Unit/Pack
Oven Bag with Ties (100 ct)	42684	18" x 24"	N/A	N/A	1/100
Oven Bag with Ties (100 ct)	42809	24" x 30"	N/A	N/A	1/100

## PANSAVER® STRONG, STACKABLE, SHRINKABLE PAN COVERS (400°F)



Description	Item #	Product Dimensions	Pan Dimensions	Pan Depth	Unit/Pack
Third Pan Cover (50 ct)	44652	20" x 6"	6.9" x 12.8"	N/A	1/50
Half Pan Cover (50 ct)	44651	23" x 6"	10.4" x 12.8"	N/A	1/50
Full Hotel Pan Cover (50 ct)	44701	34" x 7"	20.8" x 12.8"	N/A	1/50
4 Quart Round Pan Cover (50 ct)	44650	12" x 6"	7" diameter	N/A	1/50
6 & 7 Quart Round Pan Cover (50 ct)	44660	15" x 6"	9.5" diameter	N/A	1/50
9 & 11 Quart Round Pan Cover (50 ct)	44670	18" x 6"	11" diameter	N/A	1/50
Bun Sheet Pan Cover (50 ct)	41800	22" x 36"	25.5" x 17.5"	N/A	1/50



# PIPINO™ PASTRY BAGS

Description	Item #	Product Dimensions	Unit/Pack
<b>COMFORT CLEAR</b>			
Comfort Clear (100 ct)	49014	14"	1/100
Comfort Clear (100 ct)	49021	21"	1/100
<b>COOL BLUE</b>			
Cool Blue (100 ct)	49002	21"	1/100
<b>COMFORT GREEN</b>			
Comfort Green (100 ct)	49000	21"	1/100
<b>RED HOT</b>			
Red Hot (74 ct)	49001	21"	1/74



## Saftea® Urn Liner SAFTEA URN LINERS

Description	Item #	Dimensions	Unit/Pack	Compatible With Urn Models
200 SAFTEA® URN LINER	45620	20"x19" - 5" TUBE	1/50	Bunn TDO-N-3.5, TDO-4, TDS-3, TDS-3.5, TDO-3.5 LP Curtis TCN, TCN14, TCN-1510, TCN-15S, TC-2H, TC-3H, TC3S
240L SAFTEA® URN LINER	45635	24"x19" - 11" TUBE	1/50	Bunn TD4T, TD4
Tomlinson Pinch Tube Faucet - Single	49670	N/A	1/pk	Bunn TDO-N-3.5, TDO-4, TD4T, TD4, TDS-3, TDS-3.5, TDO-3.5 LP Curtis TCN, TCN14, TCN-1510, TCN-15S, TC-2H, TC-3H, TC3S

# PANSAVER<sup>®</sup> COOK CHILL BAGS & CASINGS



Description	Item #	Product Dimensions	Capacity	Unit/Pack
<b>3.0 MIL CLIPPED NYLON - HIGH HEAT</b>				
3.0 mil Pre-Clipped Nylon Casing	40619	10" x 16"	0.5 gallon	1/500
3.0 mil Pre-Clipped Nylon Casing	40027	10" x 20"	1.0 gallon	1/500
3.0 mil Pre-Clipped Nylon Casing	40173	10" x 24"	1.5 gallon	1/500
3.0 mil Pre-Clipped Nylon Casing	40031	10" x 30"	2.0 gallon	1/400
<b>3.0 MIL ANGLE SEAL COEX</b>				
3.0 mil Angle Seal Bag	42815	10" x 16"	0.5 gallon	1/500
3.0 mil Angle Seal Bag	42816	10" x 20"	1.0 gallon	1/500
3.0 mil Angle Seal Bag	42817	10" x 24"	1.5 gallon	1/500
3.0 mil Angle Seal Bag	42818	10" x 30"	2.0 gallon	1/250
<b>4.5 MIL ANGLE SEAL COEX</b>				
4.5 mil Angle Seal Bag	42785	10" x 16"	0.5 gallon	1/500
4.5 mil Angle Seal Bag	42782	10" x 20"	1.0 gallon	1/500
4.5 mil Angle Seal Bag	42783	10" x 24"	1.5 gallon	1/500
4.5 mil Angle Seal Bag	42784	10" x 30"	2.0 gallon	1/250
<b>4.5 MIL SAFETY HANDLE BAGS</b>				
4.5 mil Safety Handle Bag	43013	10" x 18"	0.5 gallon	1/500
4.5 mil Safety Handle Bag	43014	10" x 24"	1.0 gallon	1/500
4.5 mil Safety Handle Bag	43015	10" x 28"	1.5 gallon	1/250
4.5 mil Safety Handle Bag	43016	10" x 30"	2.0 gallon	1/250
4.5 mil Safety Handle Bag	43017	12" x 30"	3.0 gallon	1/250
<b>2.50 MIL LIGHTWEIGHT 7-DAY BAGS</b>				
2.50 mil Lightweight 7-Day Bags	43055	10" x 16"	0.5 gallon	1/1000
2.50 mil Lightweight 7-Day Bags	41492	10" x 20"	1.0 gallon	1/1000
2.50 mil Lightweight 7-Day Bags	41517	10" x 24"	1.5 gallon	1/1000
2.50 mil Lightweight 7-Day Bags	41518	10" x 30"	2.0 gallon	1/850
<b>3.25 MIL HEAVYWEIGHT 7-DAY BAGS</b>				
3.25 mil Heavyweight 7-Day Bags	43056	10" x 16"	0.5 gallon	1/850
3.25 mil Heavyweight 7-Day Bags	41493	10" x 20"	1.0 gallon	1/850
3.25 mil Heavyweight 7-Day Bags	41519	10" x 24"	1.5 gallon	1/800
3.25 mil Heavyweight 7-Day Bags	41520	10" x 30"	2.0 gallon	1/600



## PANSAVER® COOK CHILL VACUUM POUCHES

Description	Item #	Product Dimensions	Capacity	Unit/Pack
<b>3.0 MIL NON-BOILABLE VACUUM POUCHES</b>				
3.0 mil Non-Boilable Vacuum Pouch	41841	6" x 8"	N/A	1/1000
3.0 mil Non-Boilable Vacuum Pouch	41842	8" x 10"	N/A	1/1000
3.0 mil Non-Boilable Vacuum Pouch	41843	10" x 13"	N/A	1/1000
3.0 mil Non-Boilable Vacuum Pouch	41844	12" x 14"	N/A	1/1000
3.0 mil Non-Boilable Vacuum Pouch	41845	12" x 22"	N/A	1/500
3.0 mil Non-Boilable Vacuum Pouch	41846	16" x 26"	N/A	1/500
<b>3.6 MIL BOILABLE VACUUM POUCH</b>				
3.6 mil Boilable Vacuum Pouch	41847	12" x 16"	N/A	1/500

## PANSAVER® COOK CHILL EQUIPMENT & SUPPLIES

Description	Item #	Product Dimensions	Capacity	Unit/Pack
Cook Chill Manual Clipper	43500	N/A	N/A	1/each
Large Mouth Aluminum Funnel	40463	N/A	N/A	1/each
4 Post Pedestal (secures 4 casings)	40457	N/A	N/A	1/each
Single Post Pedestal (secures one casing)	40456	N/A	N/A	1/each
Z-411 Tipper-Tie Clips	40453	N/A	N/A	1/6250
Tyvek® Marking Ribbon	40454	2" x 350'	N/A	1/12
Tyvek® Marking Ribbon	40455	2.5" x 350'	N/A	1/12
Nylon Cable Tie Natural	43100	7"	N/A	1/1000
Pressure sensitive labels (blank)	43503	4" x 4"	N/A	1/1300
Pressure sensitive labels (printed)	43506	5" x 2"	N/A	1/1500

# PANSAVER®

## Food Service Solutions

For additional product information and applications visit [www.pansaver.com](http://www.pansaver.com).

Contact us: 877-726-7287 or [info@pansaver.com](mailto:info@pansaver.com)

